

MT-1422 16 Core Fiber Optic Terminal Box



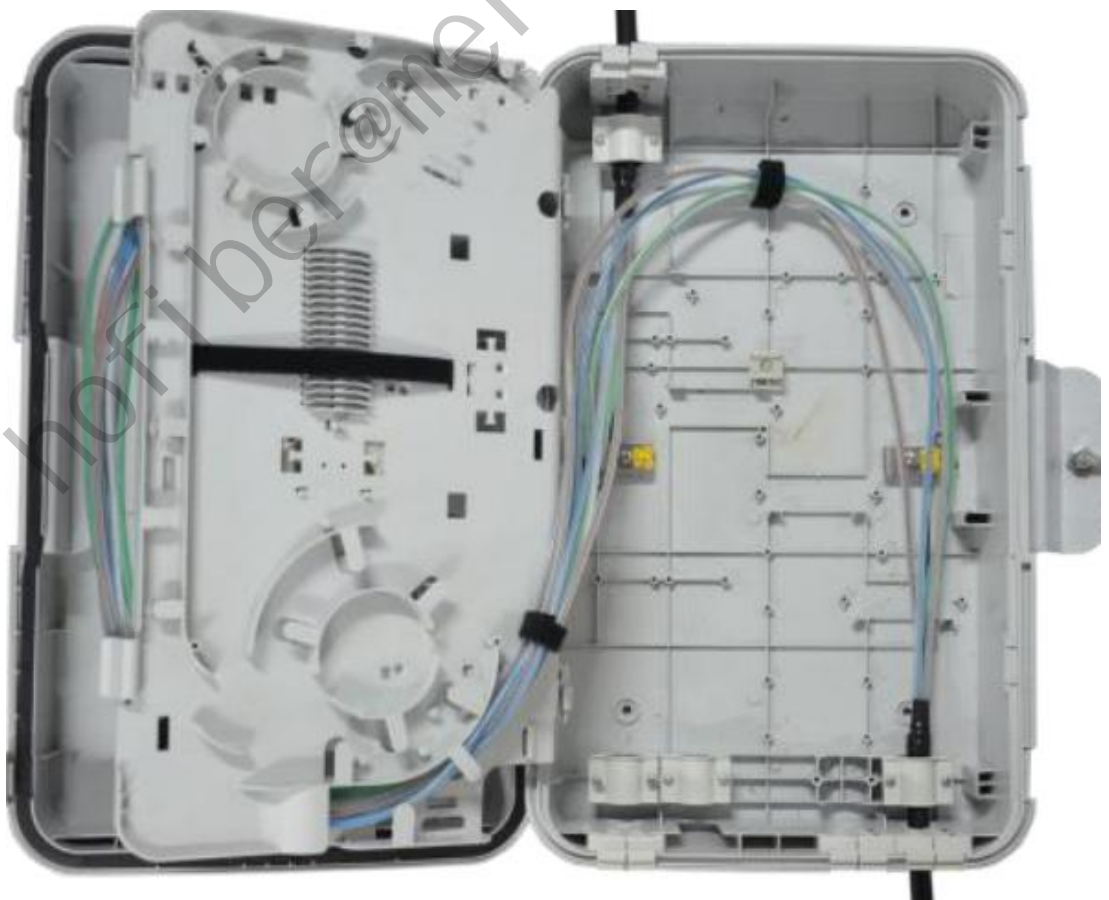
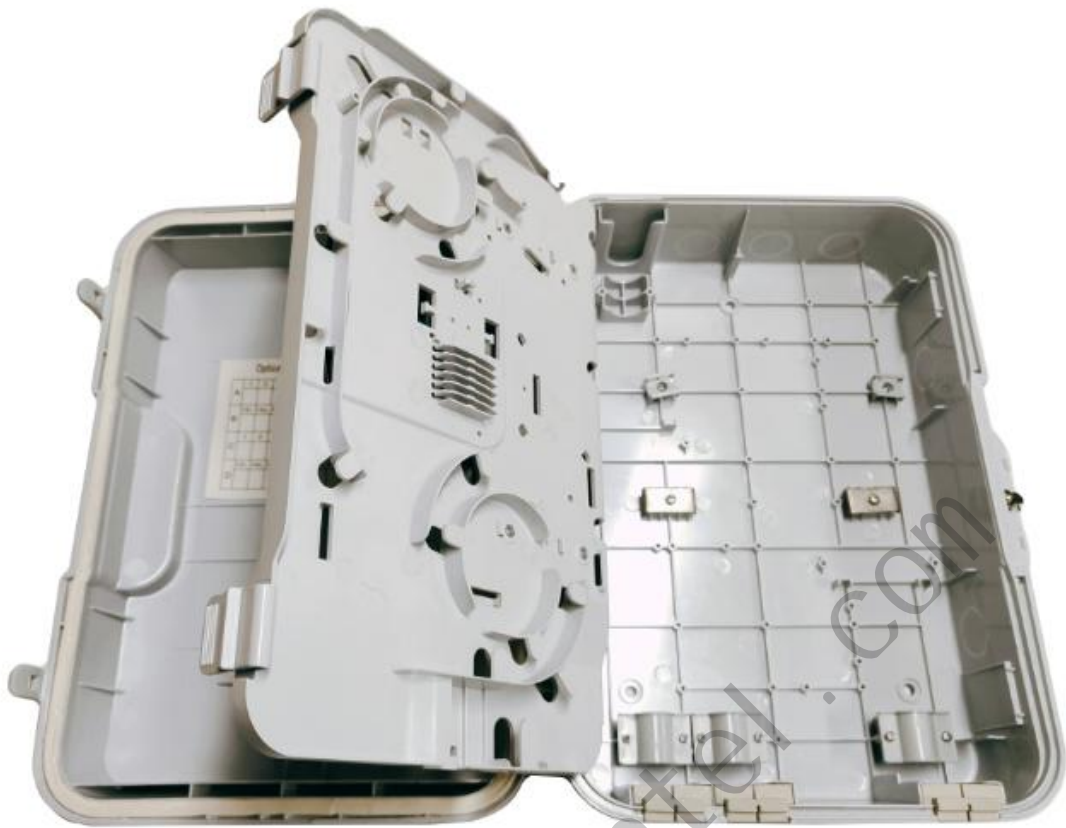
Quick Details:

Name:	16 core FAT
Item Number:	MT-1422
Dimension:	335x250x110mm
Net Weight:	2.6kg (with accessories)
Material:	Virgin Reinforced PC
Color:	Grey or as you wish.
Mount type:	Wall mount or Pillar mount (Post mount)
Package:	1set / bag & box, 6set/ Carton
CTN DIM:	53*35.5*39cm
G.W/N.W:	16.9KG/15.6KG

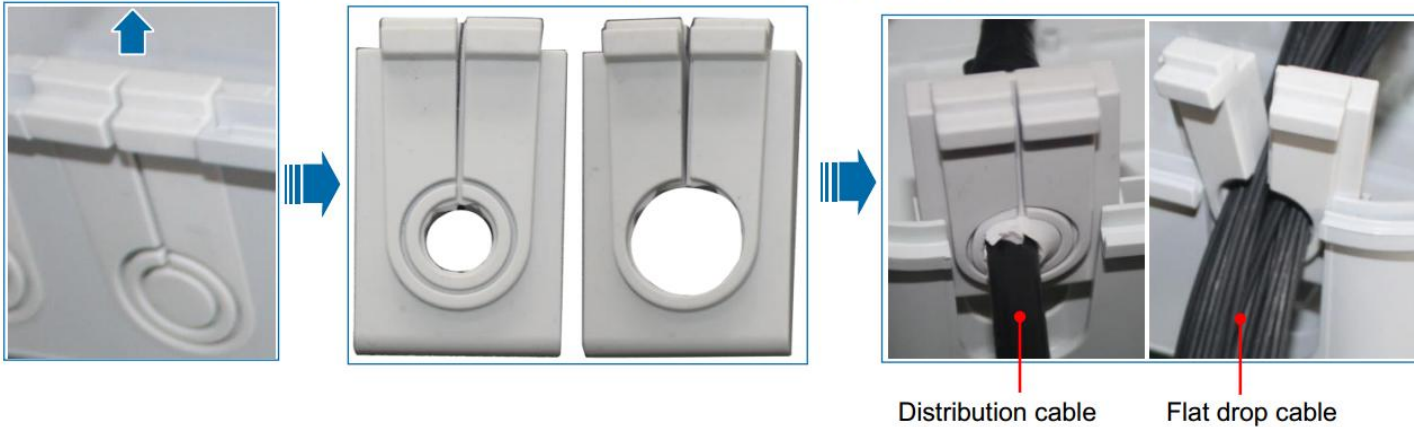


- Water-proof design with IP-65 Protection level.
- Fire retardant (UL94-V0) and UL protection material keep the FAT with long life
- Integrated with splice trays and two-steps splitter cassettes.
- Maximum 16 splice capacity, stainless anti-rust bolts and nuts.
- Easy for maintenance and expansion.
- Fiber bend radius control more than 40mm.
- 1*16 PLC Splitter can be installed in each splitter cassette.
- 16 pcs of mechanical ports for 3-7mm drop cable.
- Strong mount frame keep the FAT mount on the wall or pole very firm
- The removable rubber cable hole making the operation more convenient

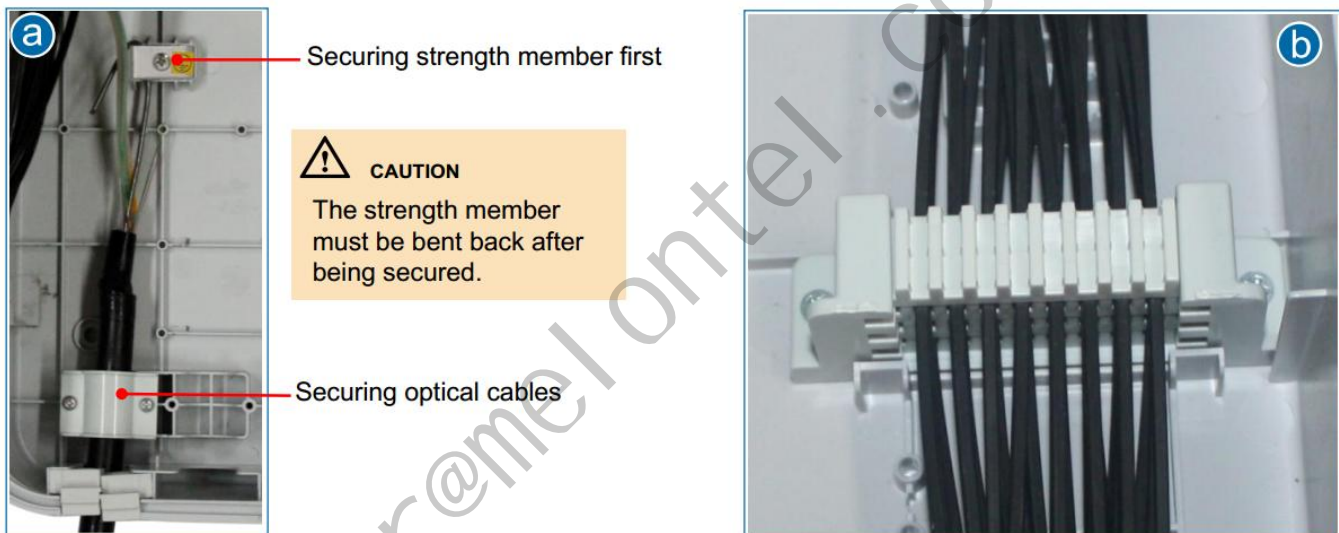




Route in optical cables. Remove the cable blocks upwards, cut through the large or small apertures based on the diameters of the optical cables, place the optical cables, and insert the blocks to the box.



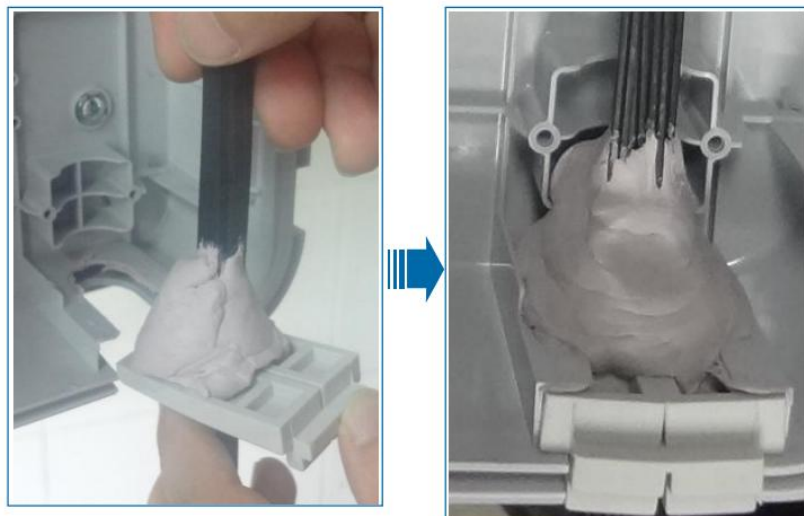
Secure the optical cables. a) Secure distribution cables. b) Secure flat drop cables (in the lower-layer slots first).



Ground the optical cables.



Seal the cable aperture of the box using sealing mud.



Accessories:



Packing:

